



Scan QR Code for installation  
and operation manual



## 48" SUMMIT LINEAR OPEN LINEAR LUXURY FIREPLACE

### UNIT DIMENSIONS

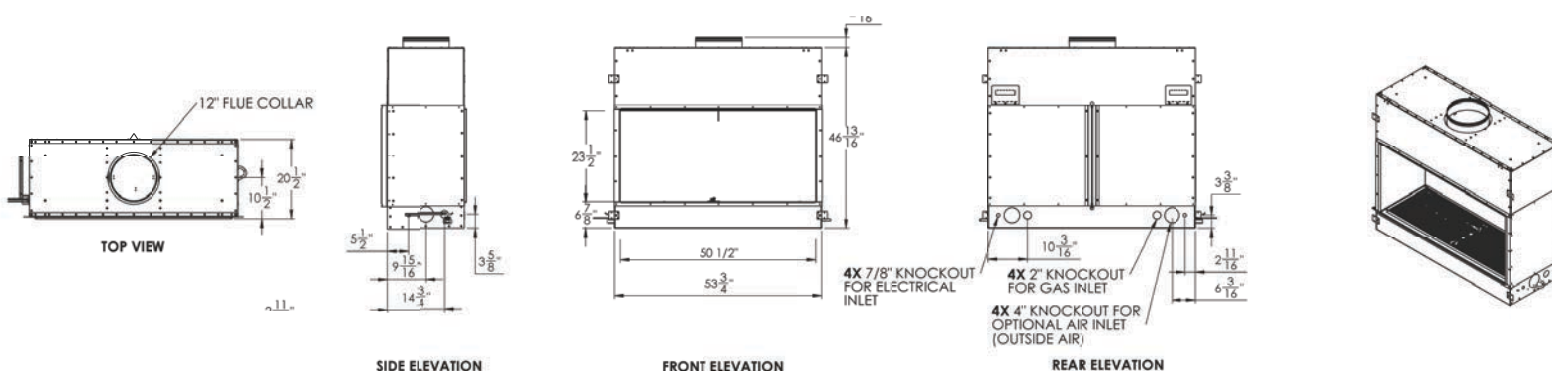
Front Width: 53  $\frac{3}{4}$ "

Height: 46  $\frac{13}{16}$ "

Depth: 19  $\frac{7}{8}$ "

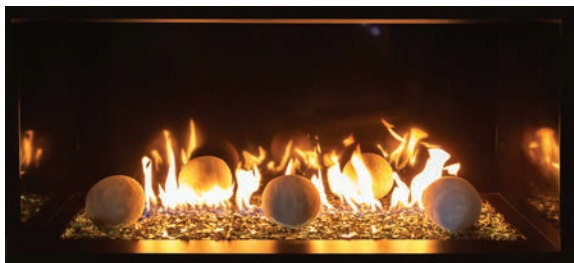
**BTUs:** SML-48BR-VEN (NG): 40,000 – 60,000  
SML-48BR-VEP (LP): 30,000 – 60,000  
SML-48BRT-VEN (NG): 45,000 – 69,000  
SML-48BRT-VEP (LP): 30,000 – 62,000

### FRONT PHYSICAL DIMENSIONS



### FIREPLACE BURNER OPTIONS

#### BEDROCK CONTEMPORARY



Must add  $\frac{1}{2}$ " reflective glass or lava granules (5 lbs/foot)

— *Optional*

6" Cannonballs in black, gray, or white

48" Western Driftwood Linear Log Set, 9 pieces

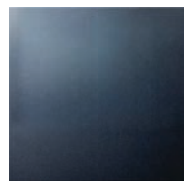
#### BEDROCK TRADITIONAL WITH GLOWFIRE™ LOGS



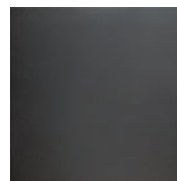
Must add  $\frac{1}{2}$ " reflective glass or lava granules (5 lbs/foot)

Driftwood GlowFire™ logs included.

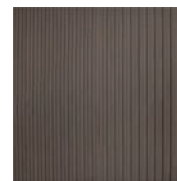
### FIREPLACE PANELS



BLACK GLASS



BLACK MATTE



BLACK FLUTED FIBER

### VIEWING REDUCTION KIT

Viewing reduction kits are available as an add-on to reduce the viewing area by 6" in height, from 24" to 18" high. The kit included the firebox reduction panel and side drywall stops.

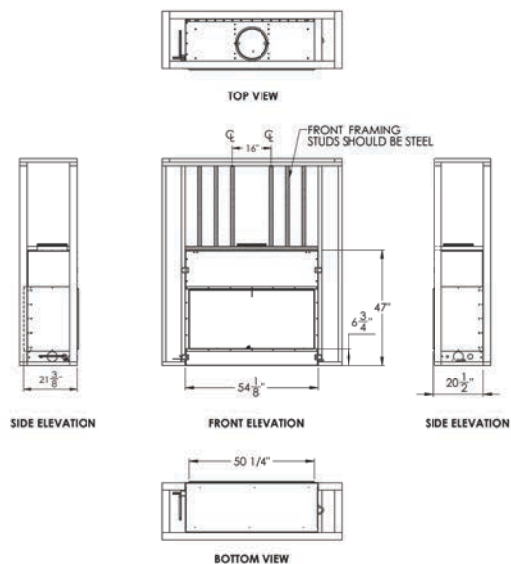
*\*If installing as a corner view or bay corner(s), reduction kits are required.*

# FRONT VIEW

## FRAMING DIMENSIONS

Width: 54 1/8" | Height: 47" | Depth: 20 1/2" | Weight: 310 lbs

Bottom to Drywall Stop: 6 3/4" | Viewing Area: 50 1/4"



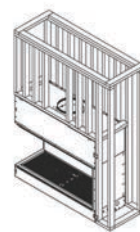
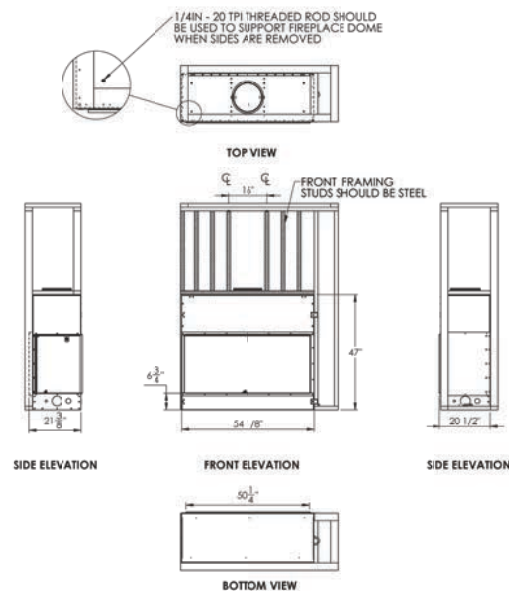
# LEFT VIEW

## FRAMING DIMENSIONS

Reverse for right view

Width: 54 1/8" | Height: 47" | Depth: 20 1/2" | Weight: 310 lbs

Bottom to Drywall Stop: 6 3/4" | Viewing Area: 50 1/4"

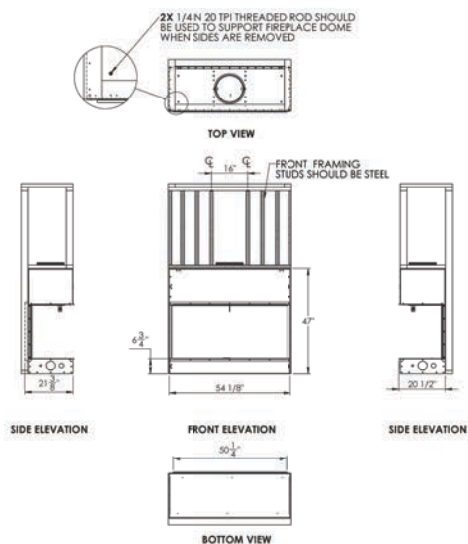


# BAY VIEW

## FRAMING DIMENSIONS

Width: 54 1/8" | Height: 47" | Depth: 20 1/2" | Weight: 310 lbs

Bottom to Drywall Stop: 6 3/4" | Viewing Area: 50 1/4"

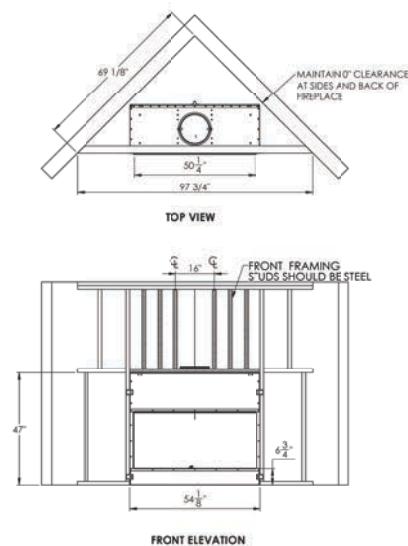


# CORNER VIEW

## FRAMING DIMENSIONS

Width: 54 1/8" | Height: 47" | Wall to Wall: 97 3/4" | Weight: 310 lbs

Bottom to Drywall Stop: 6 3/4" | Viewing Area: 50 1/4" | Angle: 69 1/8"



### MINIMUM CLEARANCE TO COMBUSTIBLES

Back and sides of fireplaces	0" minimum
Floor	0" minimum
Perpendicular wall to opening	19" minimum
Top of fireplace	0" or top of studs minimum
Chimney outer pipe surface	1" minimum

### VENTING

12" B-Vent  
Minimum Height 14"  
No more than two 45° offsets

### MANTEL CLEARANCES

A combustible mantle shelf may be installed a maximum of 12 (22.9 cm) from the wall.

The figures below show the minimum allowable distances from various combustible mantel components in relation to the fireplace opening.

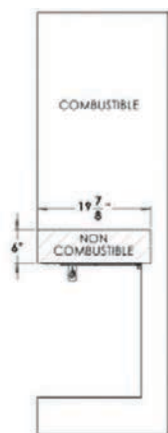


Figure 15 - Finishing Material - Side View

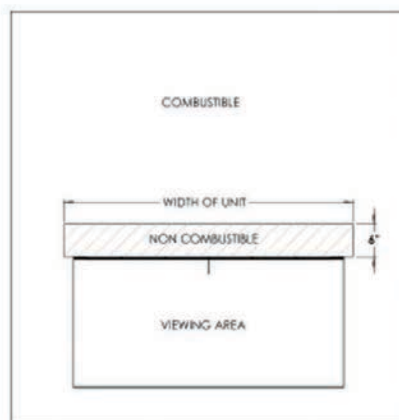


Figure 16 - Finishing Material - Front View

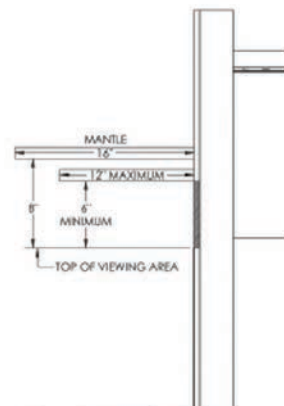


Figure 18 - Mantle Heights

### PRODUCT CODES

USA	ANSI Z21.50.2019
CAN	CSA 2.22.2019

The product information provided is not complete and is subject to change without notice.

To avoid the risk of fire and potential injury, product installation must adhere strictly to instructions contained in the Installation and Operation Manual.



Scan QR Code for installation  
and operation manual



## 60" SUMMIT LINEAR OPEN LINEAR LUXURY FIREPLACE

### UNIT DIMENSIONS

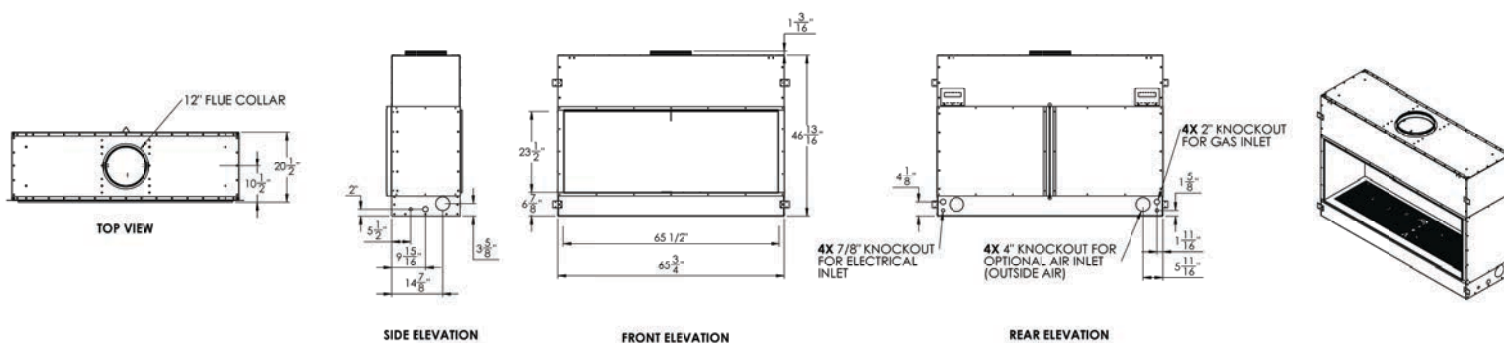
**Front Width:** 65  $\frac{3}{4}$ "

**Height:** 46  $\frac{13}{16}$ "

**Depth:** 19  $\frac{7}{8}$ "

**BTUs:** SML-60BR-VEN (NG): 50,000 – 75,000  
SML-60BR-VEP (LP): 40,000 – 75,000  
SML-60BRT-VEN (NG): 60,000 – 95,000  
SML-60BRT-VEP (LP): 40,000 – 85,000

### FRONT PHYSICAL DIMENSIONS



### FIREPLACE BURNER OPTIONS

#### BEDROCK CONTEMPORARY



Must add 1/2" reflective glass or lava granules (5 lbs/foot)

— *Optional*

6" Cannonballs in black, gray, or white

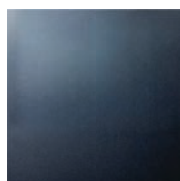
60" Western Driftwood Linear Log Set, 11 pieces

#### BEDROCK TRADITIONAL WITH GLOWFIRE™ LOGS

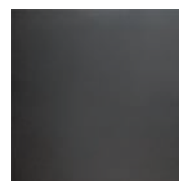


Must add 1/2" reflective glass or lava granules (5 lbs/foot)  
Driftwood GlowFire™ logs included.

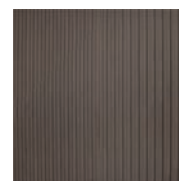
### FIREPLACE PANELS



BLACK GLASS



BLACK MATTE



BLACK FLUTED FIBER

### VIEWING REDUCTION KIT

Viewing reduction kits are available as an add-on to reduce the viewing area by 6" in height, from 24" to 18" high. The kit included the firebox reduction panel and side drywall stops.

*\*If installing as a corner view or bay corner(s), reduction kits are required.*

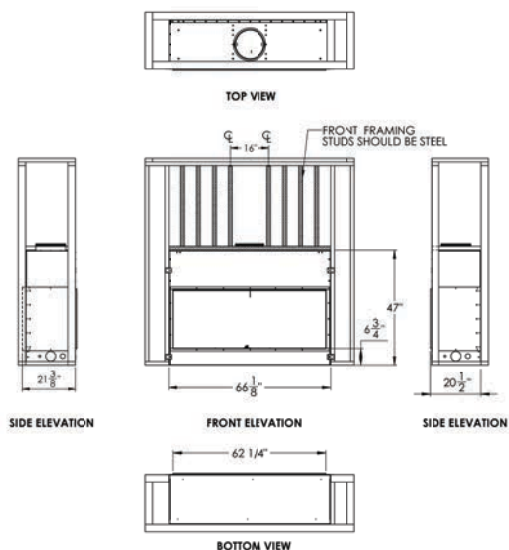
## FRONT VIEW

## FRAMING DIMENSIONS



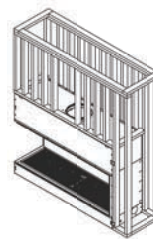
Width: 66 1/8" | Height: 47" | Depth: 20 1/2" | Weight: 355 lbs

Bottom to Drywall Stop: 6 3/4" | Viewing Area: 62 1/4"



## LEFT VIEW

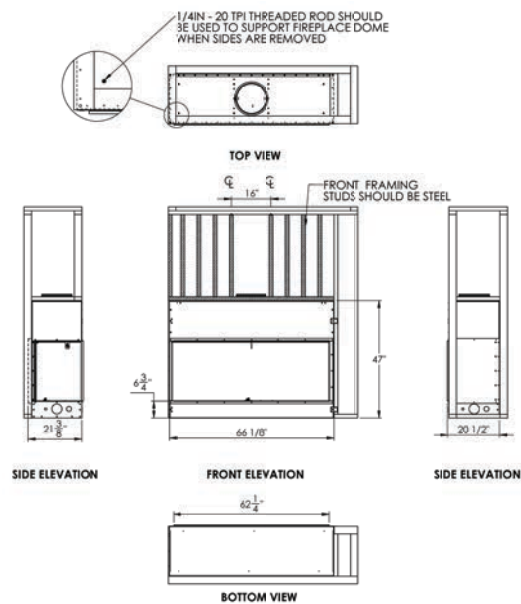
## FRAMING DIMENSIONS



Reverse for right view

Width: 66 1/8" | Height: 47" | Depth: 20 1/2" | Weight: 355 lbs

Bottom to Drywall Stop: 6 3/4" | Viewing Area: 62 1/4"



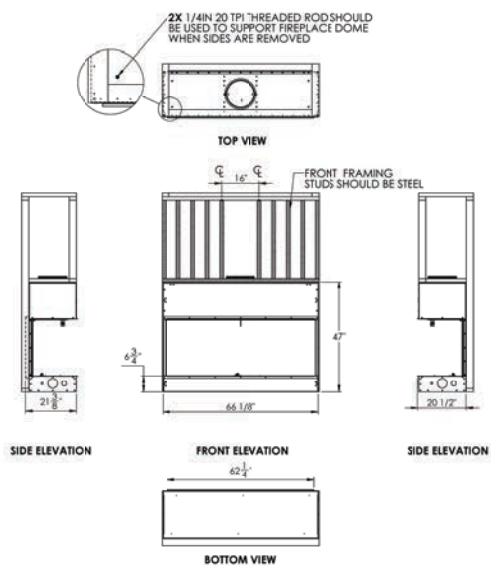
## BAY VIEW

## FRAMING DIMENSIONS



Width: 66 1/8" | Height: 47" | Depth: 20 1/2" | Weight: 355 lbs

Bottom to Drywall Stop: 6 3/4" | Viewing Area: 62 1/4"



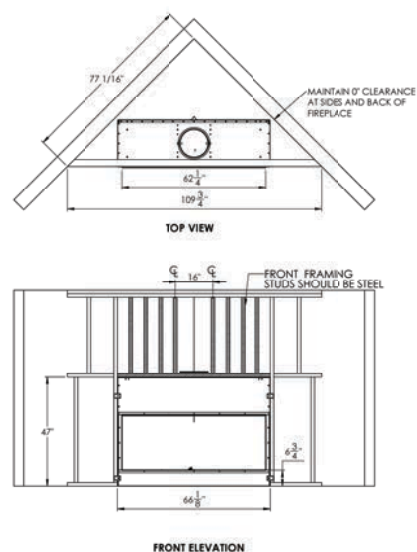
## CORNER VIEW

## FRAMING DIMENSIONS



Width: 66 1/8" | Height: 47" | Wall to Wall: 109 3/4" | Weight: 355 lbs

Bottom to Drywall Stop: 6 3/4" | Viewing Area: 62 1/4" | Angle: 72 1/16"



### MINIMUM CLEARANCE TO COMBUSTIBLES

Back and sides of fireplaces	0" minimum
Floor	0" minimum
Perpendicular wall to opening	19" minimum
Top of fireplace	0" or top of studs minimum
Chimney outer pipe surface	1" minimum

### VENTING

12" B-Vent  
 Minimum Height 14"  
 No more than two 45° offsets

### MANTEL CLEARANCES

A combustible mantle shelf may be installed a maximum of 12 (22.9 cm) from the wall.

The figures below show the minimum allowable distances from various combustible mantel components in relation to the fireplace opening.

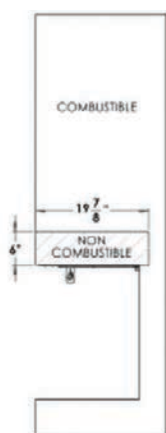


Figure 15 - Finishing Material - Side View

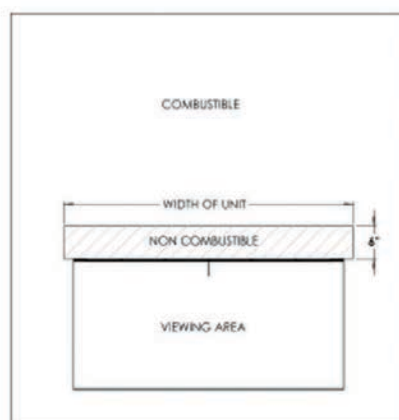


Figure 16 - Finishing Material - Front View

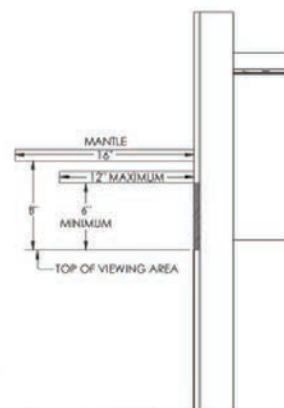


Figure 18 - Mantle Heights

### PRODUCT CODES

USA	ANSI Z21.50.2019
CAN	CSA 2.22.2019

The product information provided is not complete and is subject to change without notice.

To avoid the risk of fire and potential injury, product installation must adhere strictly to instructions contained in the Installation and Operation Manual.



Scan QR Code for installation  
and operation manual



## 72" SUMMIT LINEAR OPEN LINEAR LUXURY FIREPLACE

### UNIT DIMENSIONS

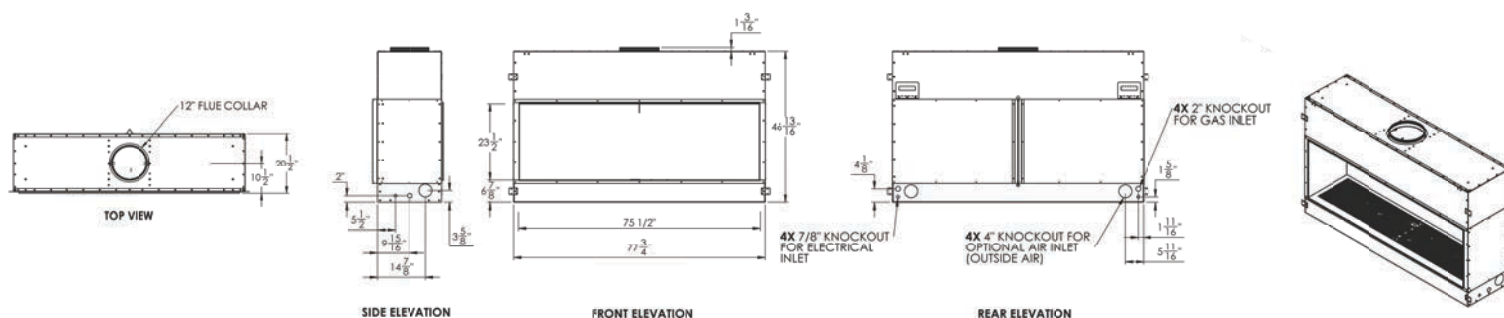
**Front Width:** 77  $\frac{3}{4}$ "

**Height:** 46  $\frac{13}{16}$ "

**Depth:** 19  $\frac{7}{8}$ "

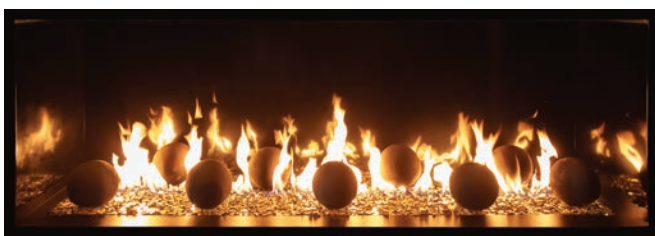
**BTUs:** SML-72BR-VEN (NG): 60,000 – 90,000  
SML-72BR-VEP (LP): 50,000 – 90,000  
SML-72BRT-VEN (NG): 60,000 – 95,000  
SML-72BRT-VEP (LP): 40,000 – 85,000

### FRONT PHYSICAL DIMENSIONS



### FIREPLACE BURNER OPTIONS

#### BEDROCK CONTEMPORARY



Must add 1/2" reflective glass or lava granules (5 lbs/foot)

— *Optional*

6" Cannonballs in black, gray, or white

72" Western Driftwood Linear Log Set, 13 pieces

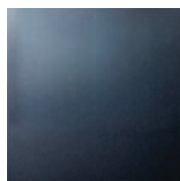
#### BEDROCK TRADITIONAL WITH GLOWFIRE™ LOGS



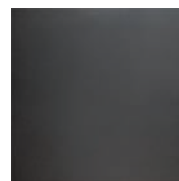
Must add 1/2" reflective glass or lava granules (5 lbs/foot)

Driftwood GlowFire™ logs included.

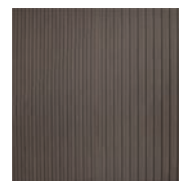
### FIREPLACE PANELS



BLACK GLASS



BLACK MATTE



BLACK FLUTED FIBER

### VIEWING REDUCTION KIT

Viewing reduction kits are available as an add-on to reduce the viewing area by 6" in height, from 24" to 18" high. The kit included the firebox reduction panel and side drywall stops.

*\*If installing as a corner view or bay corner(s), reduction kits are required.*

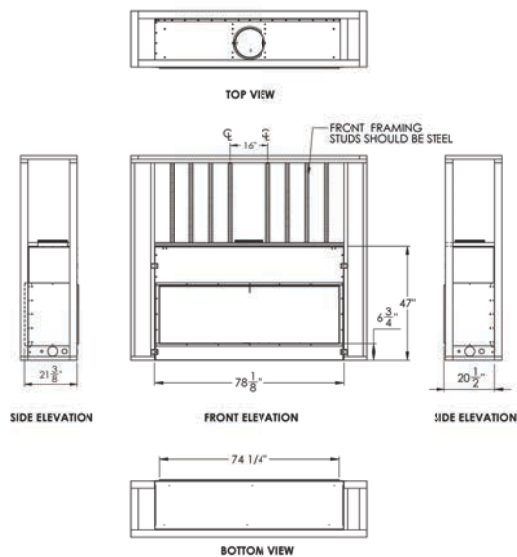
# FRONT VIEW

## FRAMING DIMENSIONS



Width: 78 1/8" | Height: 47" | Depth: 20 1/2" | Weight: 395 lbs

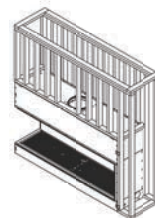
Bottom to Drywall Stop: 6 3/4" | Viewing Area: 74 1/4"



# LEFT VIEW

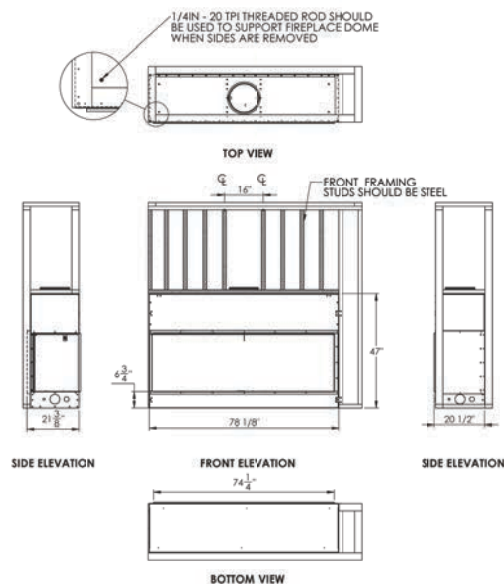
## FRAMING DIMENSIONS

Reverse for right view



Width: 78 1/8" | Height: 47" | Depth: 20 1/2" | Weight: 395 lbs

Bottom to Drywall Stop: 6 3/4" | Viewing Area: 74 1/4"



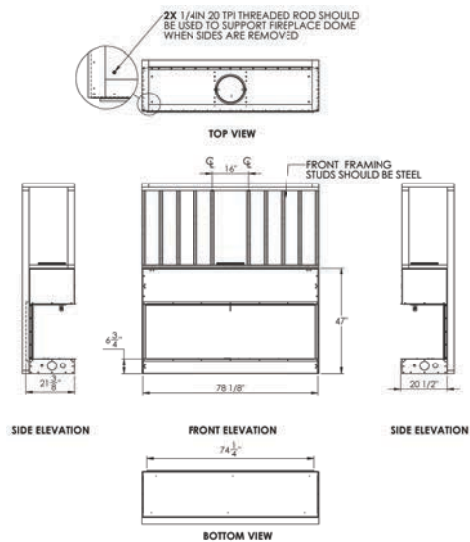
# BAY VIEW

## FRAMING DIMENSIONS



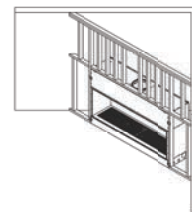
Width: 78 1/8" | Height: 47" | Depth: 20 1/2" | Weight: 395 lbs

Bottom to Drywall Stop: 6 3/4" | Viewing Area: 74 1/4"



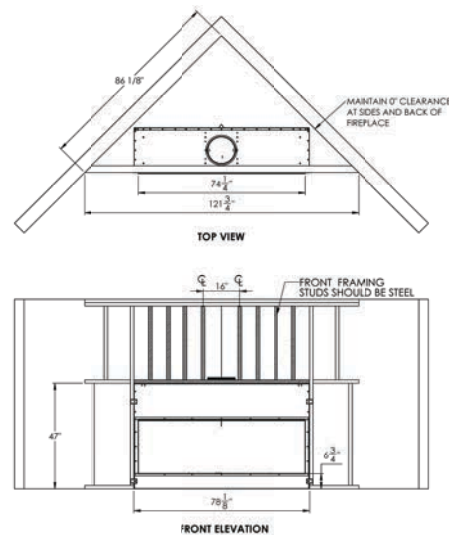
# CORNER VIEW

## FRAMING DIMENSIONS



Width: 78 1/8" | Height: 47" | Wall to Wall: 121 3/4" | Weight: 395 lbs

Bottom to Drywall Stop: 6 3/4" | Viewing Area: 74 1/4" | Angle: 86 1/8"



### MINIMUM CLEARANCE TO COMBUSTIBLES

Back and sides of fireplaces	0" minimum
Floor	0" minimum
Perpendicular wall to opening	19" minimum
Top of fireplace	0" or top of studs minimum
Chimney outer pipe surface	1" minimum

### VENTING

12" B-Vent  
 Minimum Height 14"  
 No more than two 45° offsets

### MANTEL CLEARANCES

A combustible mantle shelf may be installed a maximum of 12 (22.9 cm) from the wall.

The figures below show the minimum allowable distances from various combustible mantel components in relation to the fireplace opening.

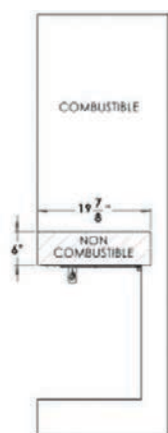


Figure 15 - Finishing Material - Side View

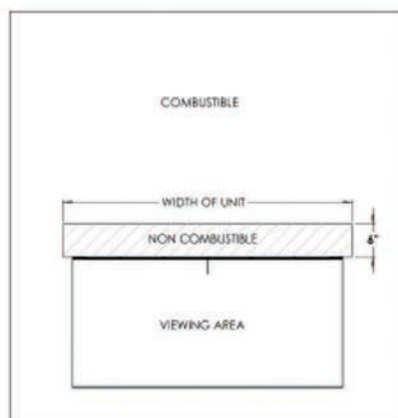


Figure 16 - Finishing Material - Front View

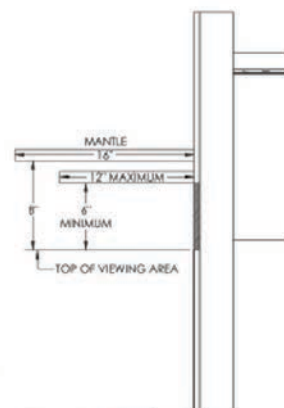


Figure 18 - Mantle Heights

### PRODUCT CODES

USA	ANSI Z21.50.2019
CAN	CSA 2.22.2019

The product information provided is not complete and is subject to change without notice.

To avoid the risk of fire and potential injury, product installation must adhere strictly to instructions contained in the Installation and Operation Manual.